



GAT MONTHLY MEMBERSHIP PROGRESS REPORT

Results as of: 4/30/2022

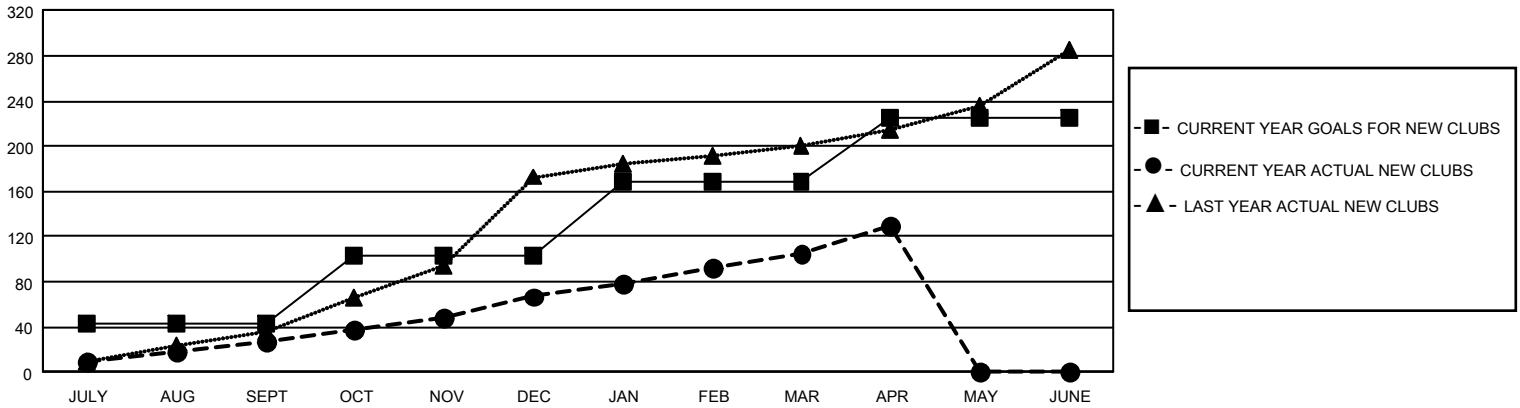
GAT Constitutional Area 3

REPORT DOES NOT INCLUDE CLUBS IN UNDISTRICTED AREAS.

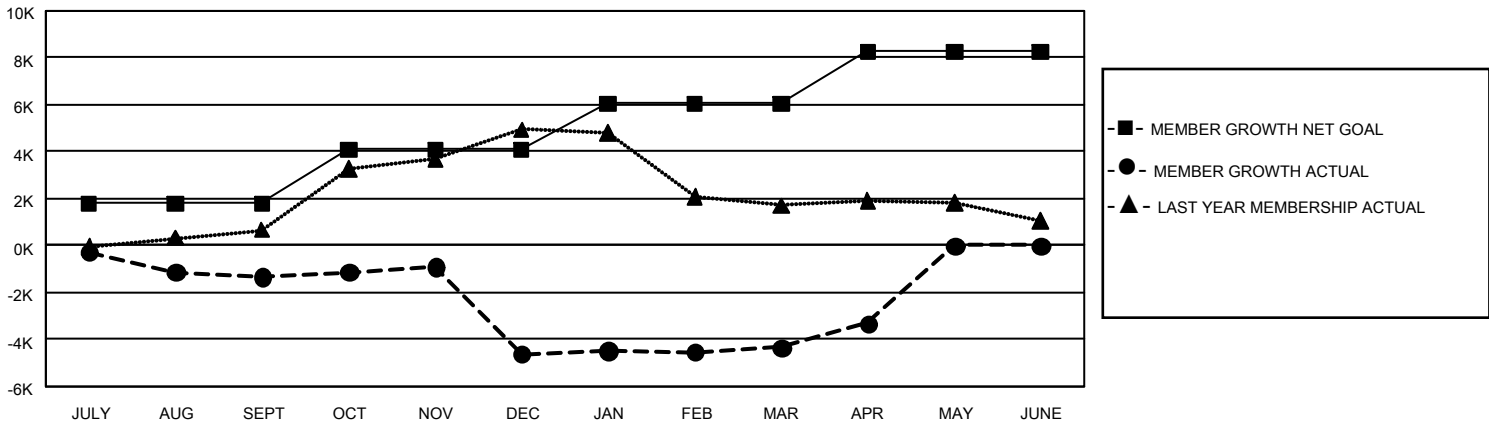
Clubs			
RESULTS FOR 2021-2022			
QUARTER	NEW CLUB GOAL	NEW CLUBS	DROPPED CLUBS
JULY/AUG/SEPT	129	28	106
OCT/NOV/DEC	183	39	113
JAN/FEB/MAR	195	38	41
APR/MAY/JUNE	168	24	4

Members			
RESULTS FOR 2021-2022			
QUARTER	MEMBER GROWTH NET GOAL	MEMBER GROWTH ACTUAL	DROPPED MEMBERS ACTUAL (including transfers)
JULY/AUG/SEPT	1794	3,497	4,365
OCT/NOV/DEC	2298	4,419	7,284
JAN/FEB/MAR	1962	3,555	2,589
APR/MAY/JUNE	2200	1,950	829

GOALS AND ACTUAL NEW CLUBS CUMULATIVE



GOALS AND ACTUAL MEMBERS CUMULATIVE



DROPPED CLUBS: 258	2,064 CLUBS OF 4,402 ADDED 1 OR MORE NEW MEMBERS	GENDER DISTRIBUTION	
		MALE 49,304 (47.82%)	FEMALE 53,790 (52.17%)
DROPPED MEMBERS		NON BINARY 0 (0.00%)	PREFER NOT TO ANSWER 12 (0.01%)
DECEASED 878	CLICK HERE FOR CUMULATIVE MEMBERSHIP DATA	TOTAL FAMILY UNIT MEMBERS 38,948	
CLUB CANCELLED 3,511		FAMILY MEMBERS PAYING HALF DUES 21,696	
OTHER 10,655			
TOTAL 15,044			